

BPS *Arts*

**EXPANSION
INITIATIVE**

Houston Arts Alliance

September 2012



Vision & Principles

Access ~ Equity ~ Quality

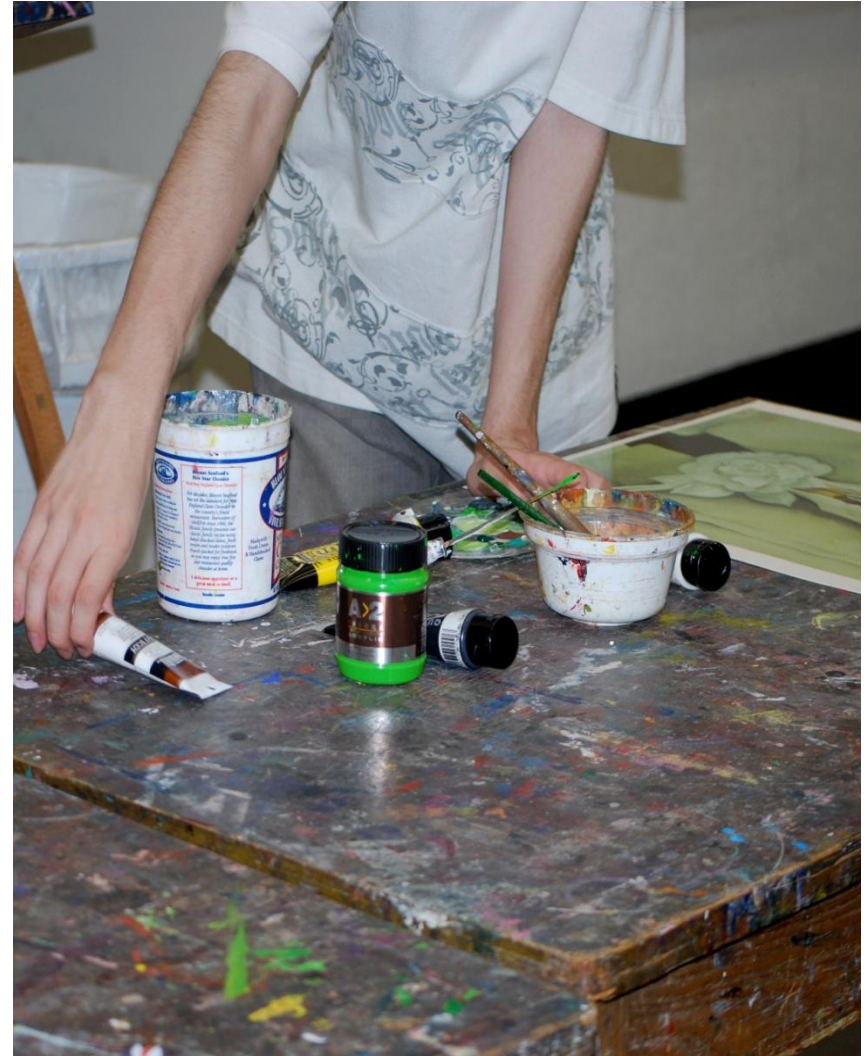
“Arts are crucial to a rigorous and high-quality education – and access to the arts in schools is an issue of equity for all of Boston’s children.”

– Dr. Carol R. Johnson, Superintendent

Strategy and Approach

A multi-year, three-part strategy:

- Expand direct in-school arts education
- Build capacity of BPS schools and central office
- Strengthen partnership coordination to leverage cultural resources



Background and Timeline

Planning Phase

Spring 2008-Winter 2009

- Local philanthropic support for initial planning
- Internal/external planning team chaired by Superintendent and EdVestors
- Data-driven process with first-ever inventory of student arts experiences

Phase I

February 2009-June 2011

- *Arts Advantage* report with citywide goals
- Launched \$2.5M local Arts Expansion Fund to support direct arts expansion goal
- Planning grant (\$750k) from Wallace to develop long-term implementation plan

Phase II

June 2011- June 2015

- Implementation grant (\$4M) from Wallace Foundation to execute long-term capacity-building plan
- Raising \$3M for local Arts Expansion Fund
- Reaching goal of serving all K-8 students with weekly, year-long arts instruction

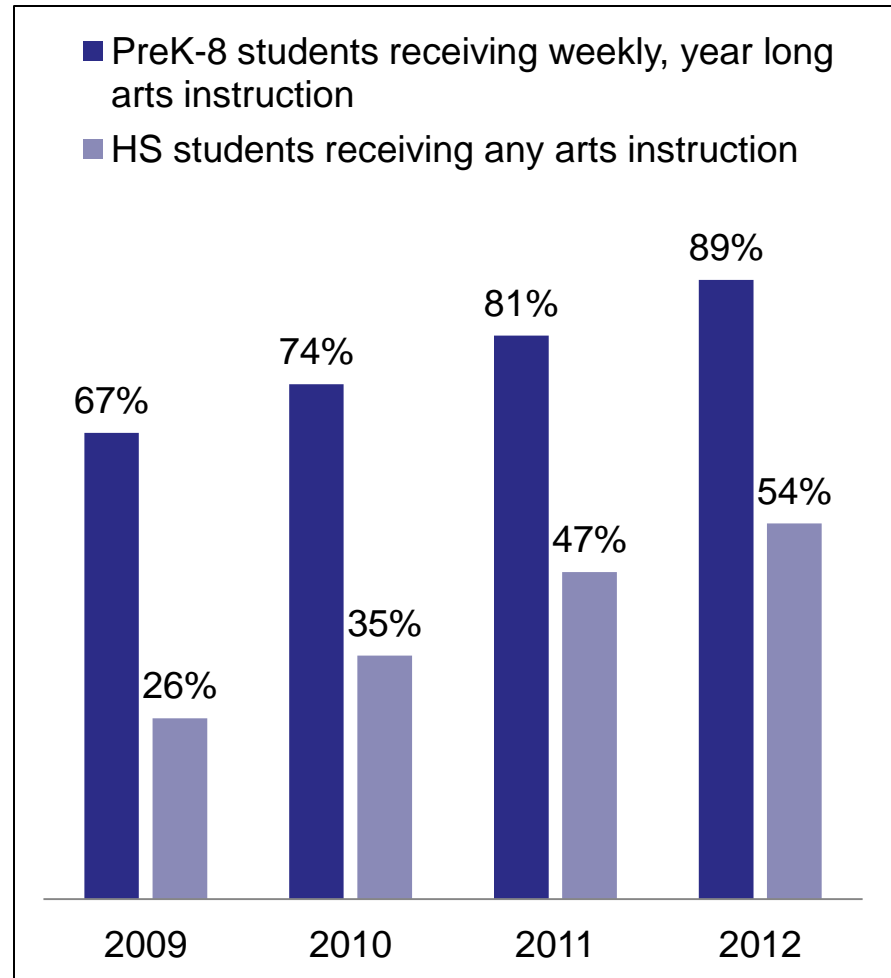
Progress to Date

Expansion goals

1. Increase weekly, year-long arts instruction to reach 100% of students in K-8
2. Increase high school arts experiences

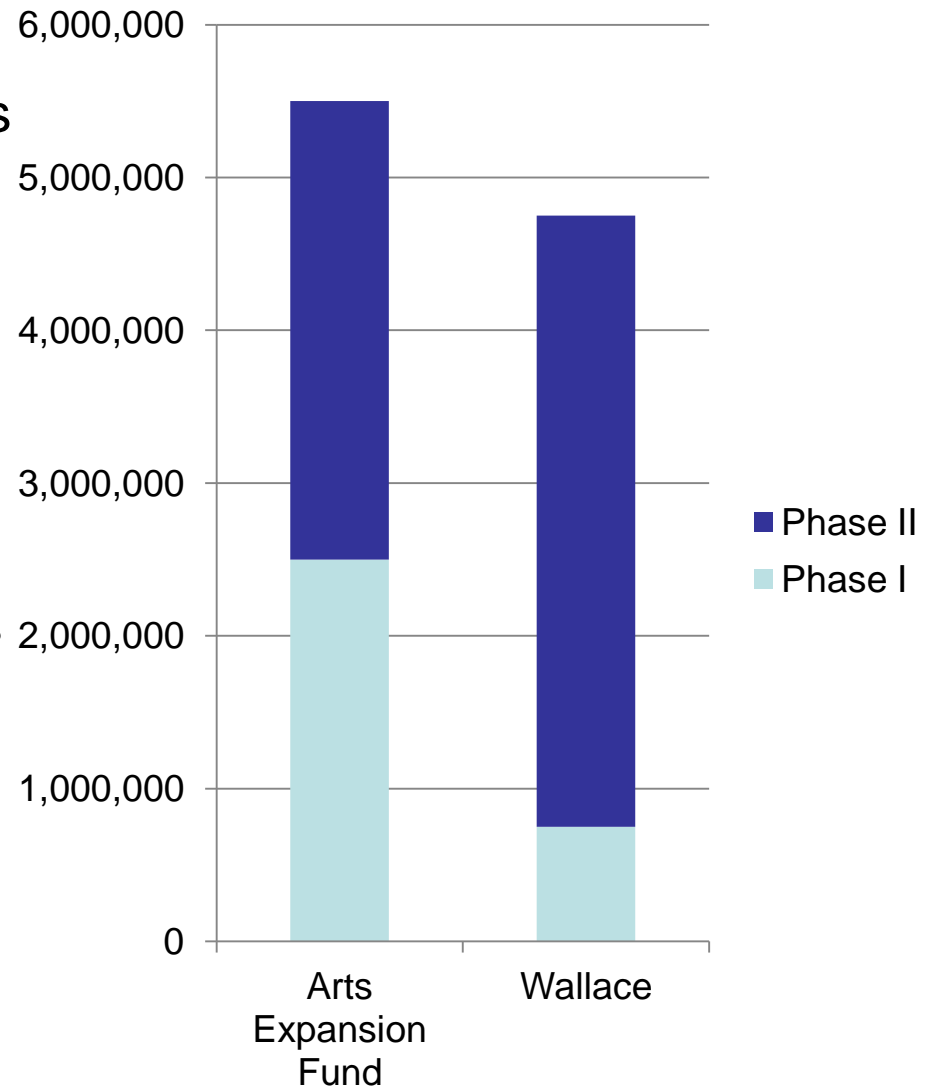
Progress in First 3 Years

- 22% increase in K-8
- Doubled high school arts opportunities
- Over 14,000 additional students now receiving arts

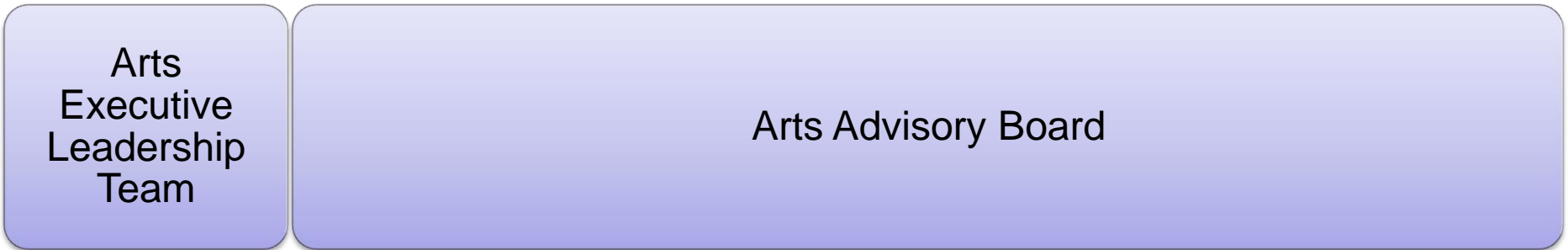


Arts Expansion Funding

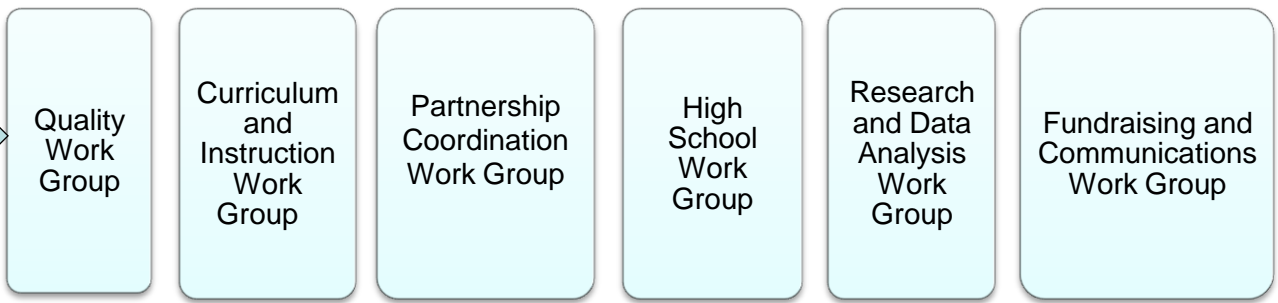
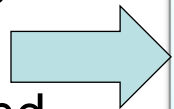
- Local Arts Expansion Fund supports direct arts instruction
 - \$4.2 of \$5.5M raised to date
- Wallace funds support the adult work and capacity-building to build a sustainable system
- Now \$10M enterprise over 6+ years
- Complemented by increased public funds from schools & district (+\$2M annually) for more arts teachers



Stakeholder Involvement



Over 60 Arts Specialists, Principals and Headmasters, Nonprofit Partners and Researchers



Phase II Implementation

Expanding Direct Arts Instruction

- Approaching goal of 100% weekly arts for students grades K-8
- Creating multiple pathways for HS students to meet graduation requirement in arts

Building Capacity of BPS Arts Department:

- Positioning BPS Arts Office as tactical support unit for schools, staff & principals
- Curriculum mapping and alignment, professional development and quality assessment system, student assessments

Strengthening partnerships

- New BPS Arts Partnership Manager, stipended building-level liaisons, and arts partner database

Sustainability & Accountability

- Communications campaign, ongoing fundraising, continued data collection

“Expanding the arts in schools brings new energy to classrooms, increases engagement by students, and improves school choices for families. The arts enrich our young people, our schools, and our neighborhoods.”

- *Mayor Thomas M. Menino*

Contact Information

Ruth Mercado-Zizzo, Arts Expansion Initiative
Director, EdVestors

artsfund@edvestors.org

www.edvestors.org

Myran Parker-Brass, Executive Director for Arts,
Boston Public Schools

www.bpsarts.org

Supplemental Slides

Funding Impact

	BPS Arts FTEs	Arts Fund Grant Awards	Students Impacted through Grants	Total Additional Students Reached Annually
SY 09	156.6	\$100,000 (pilot)	1,000 (half year)	
SY 10	160.1	\$450,000	2,500	+5,000
SY 11	166.7	\$700,000	5,000	+9,000
SY 12	182.8	\$835,000	8,000	+14,000

- Public funding: BPS is making an increased significant yearly investment in arts – up \$2M annually
- Private philanthropy: Arts Fund as catalyst and incubator for continued expansion